

Mark Hotel

Projet déco

Réhabilitation du Mark Hotel

Localisation

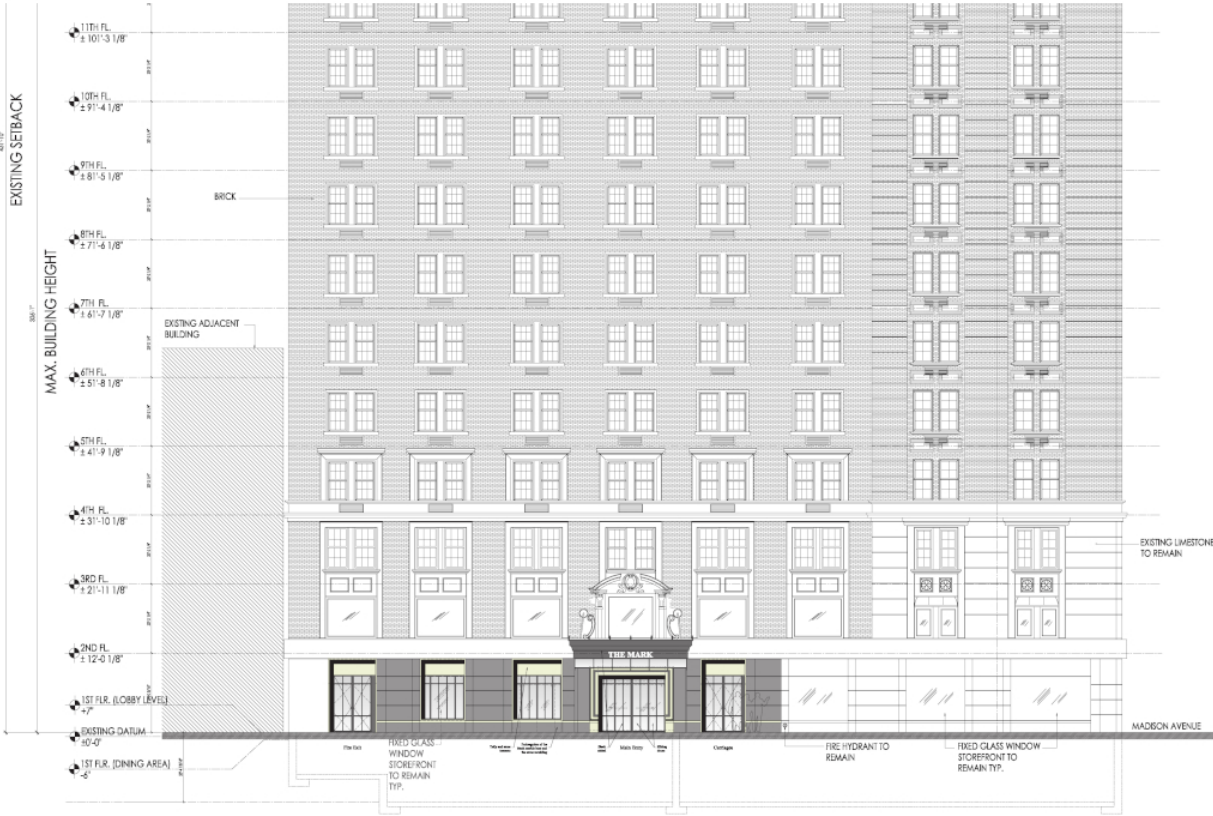
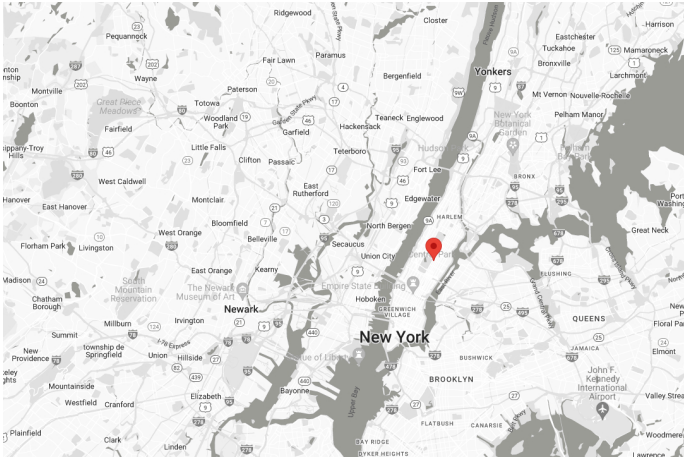
New York (USA)

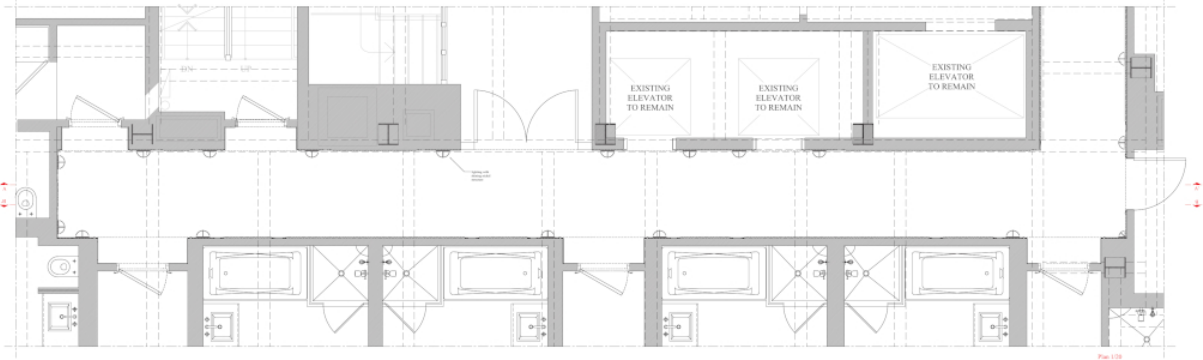
Détails

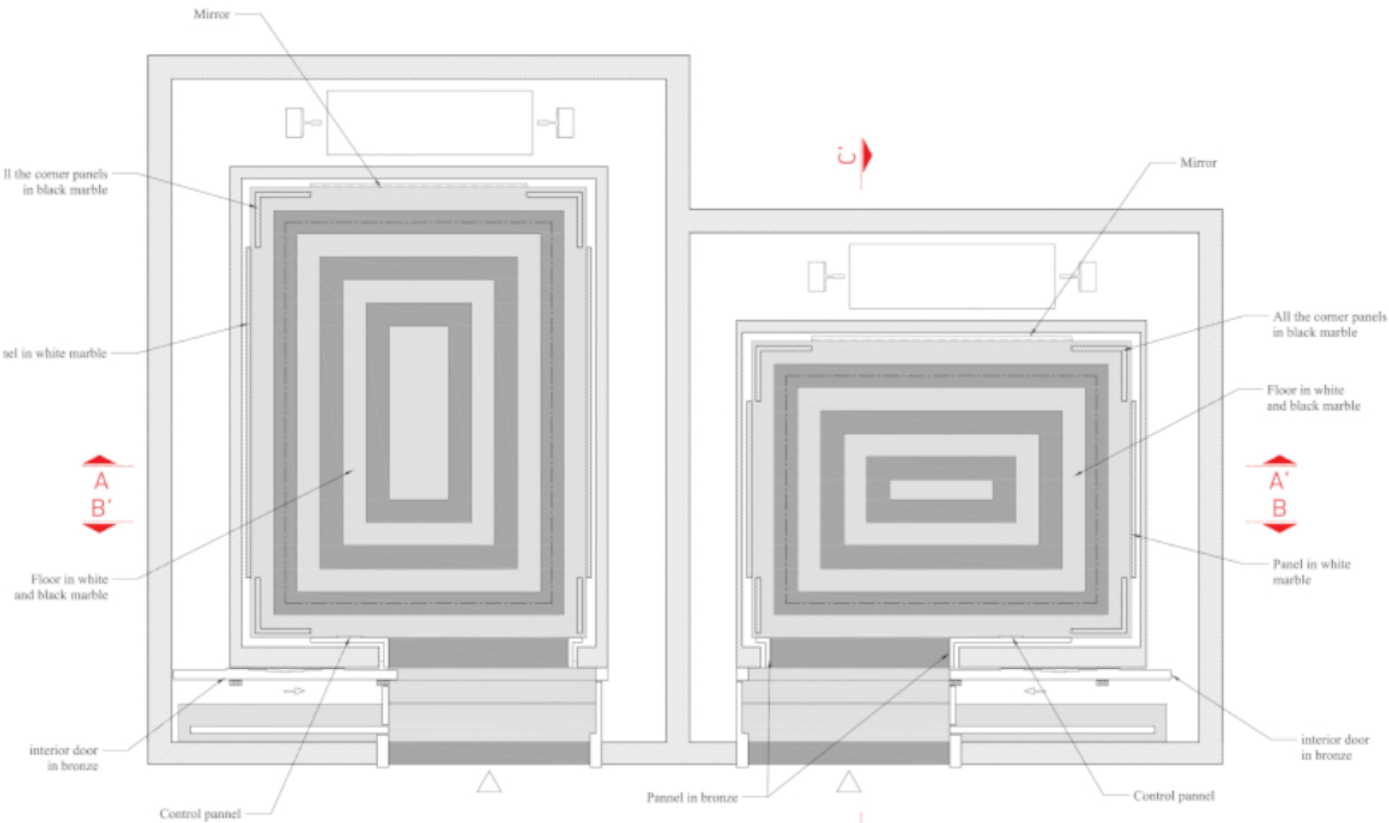
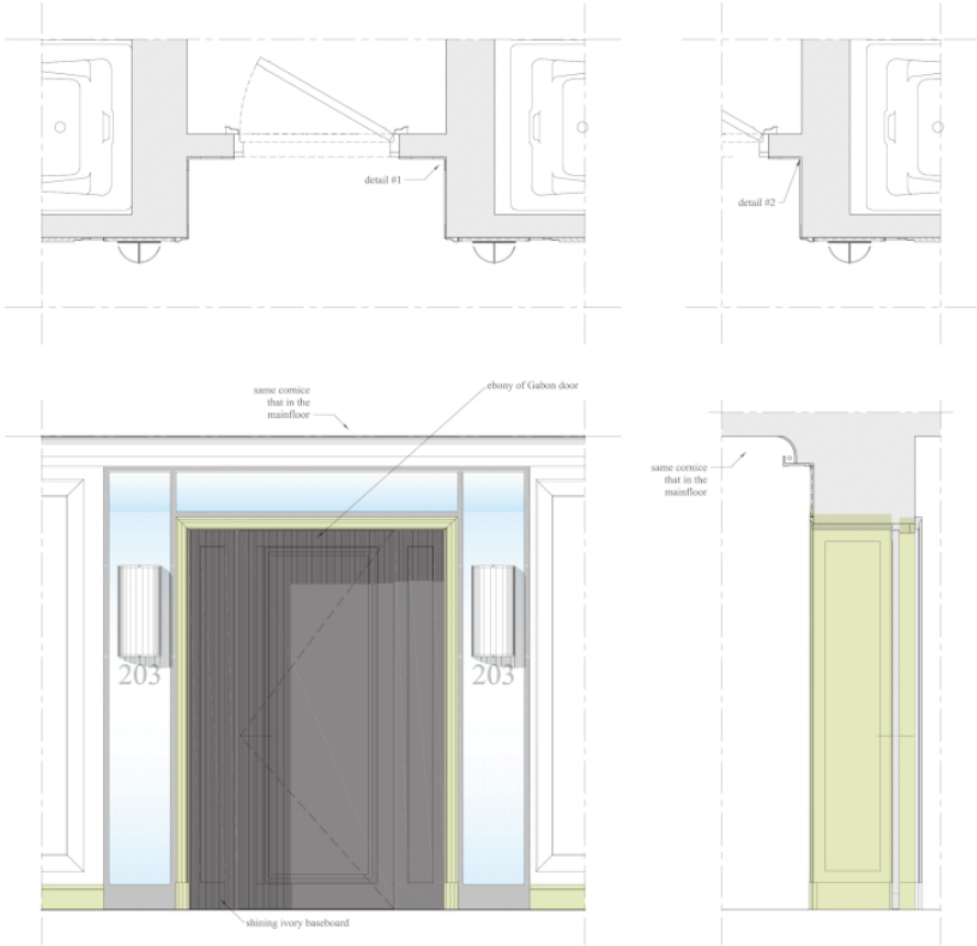
Projet réalisé - DCE

Collaboration

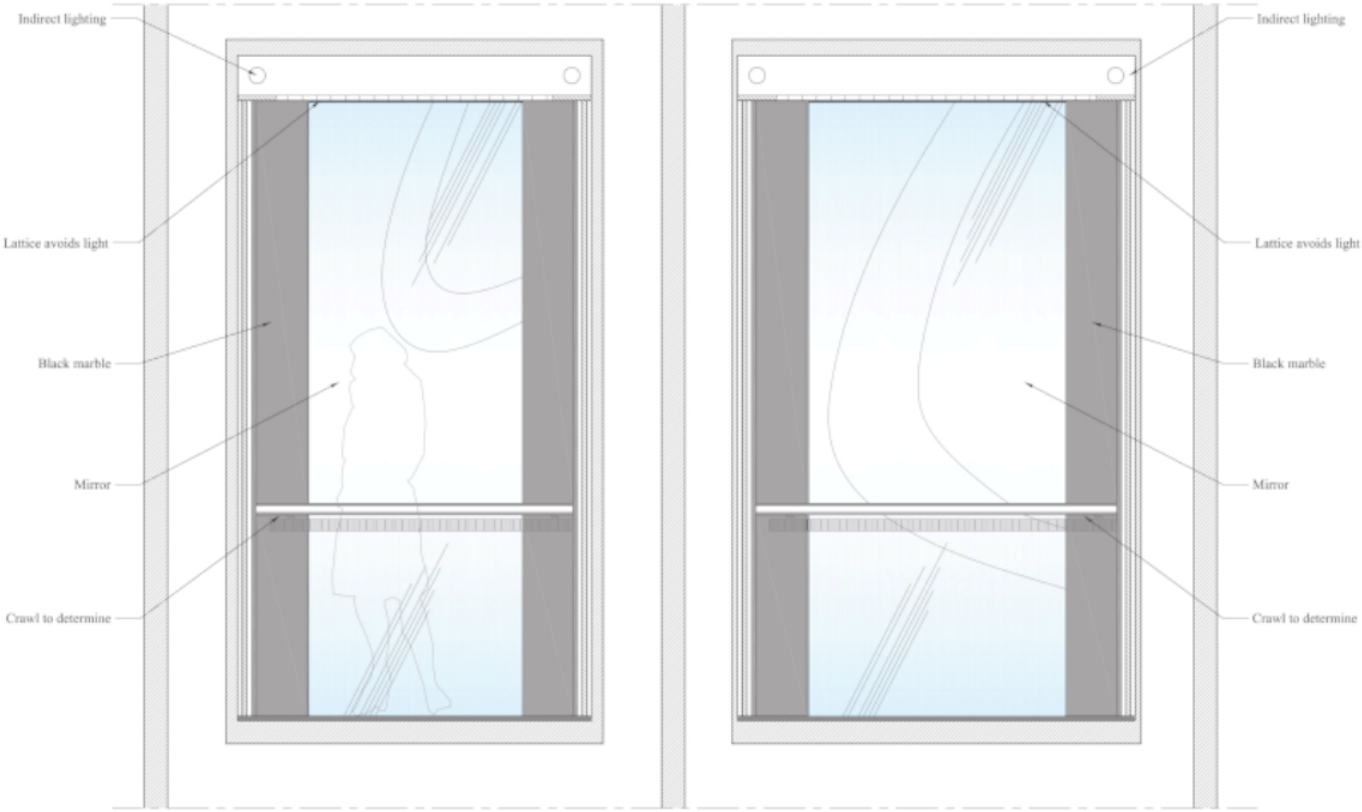
Unza Architecture, Jacques Grange Office



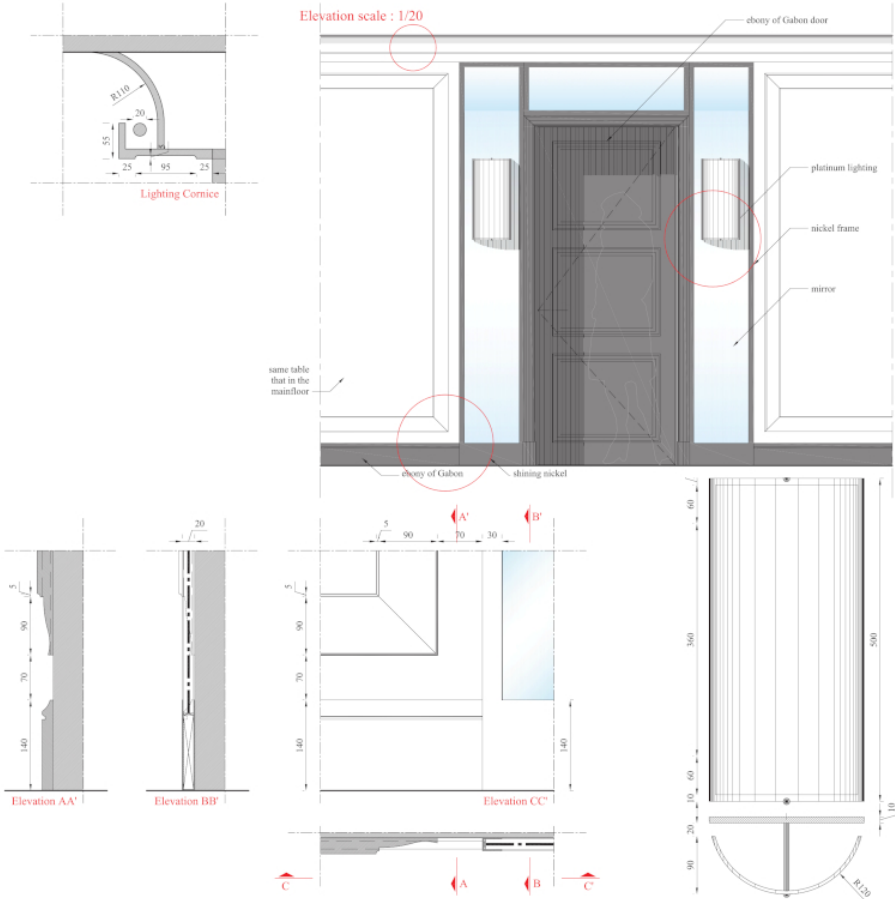


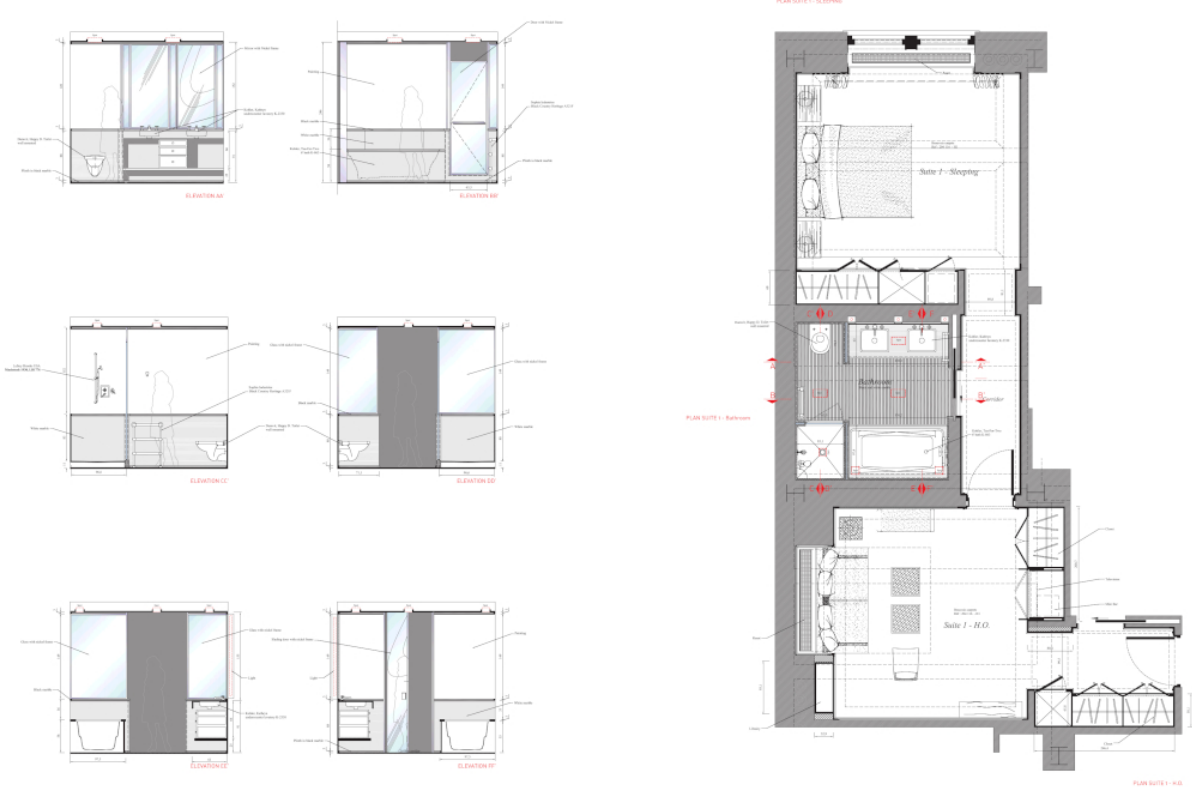
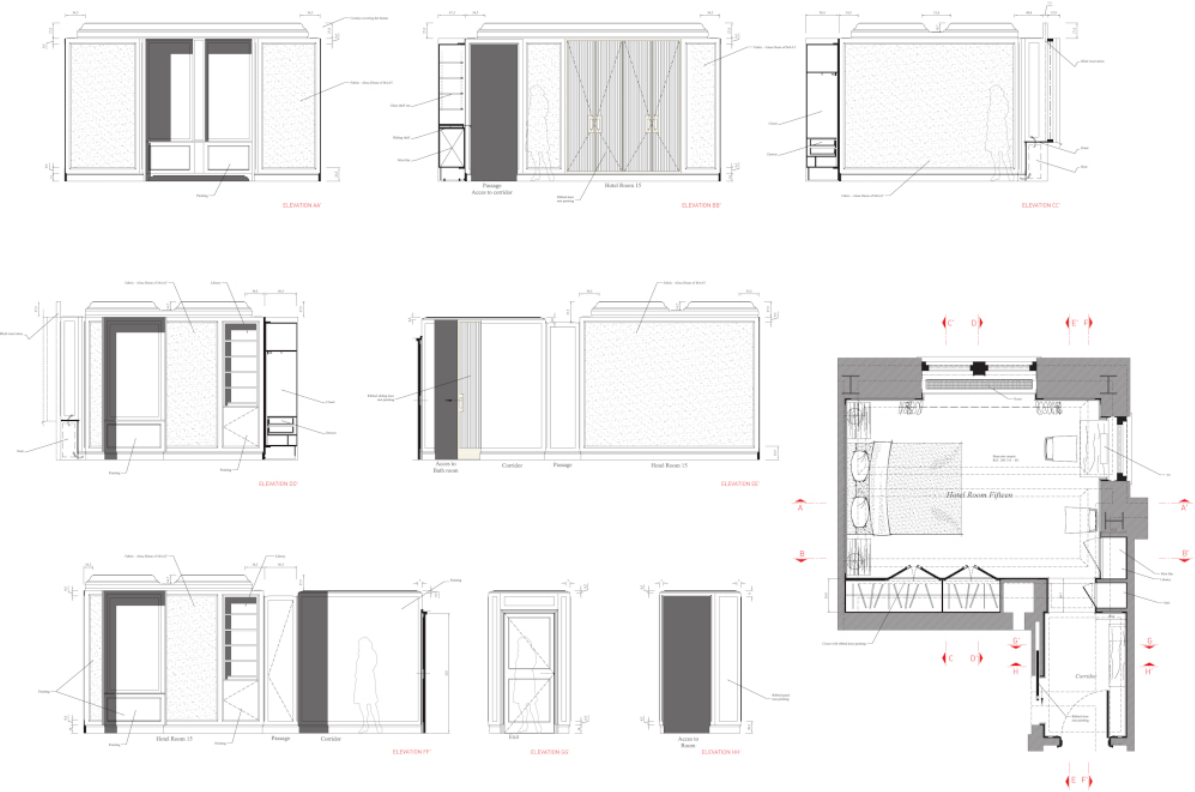


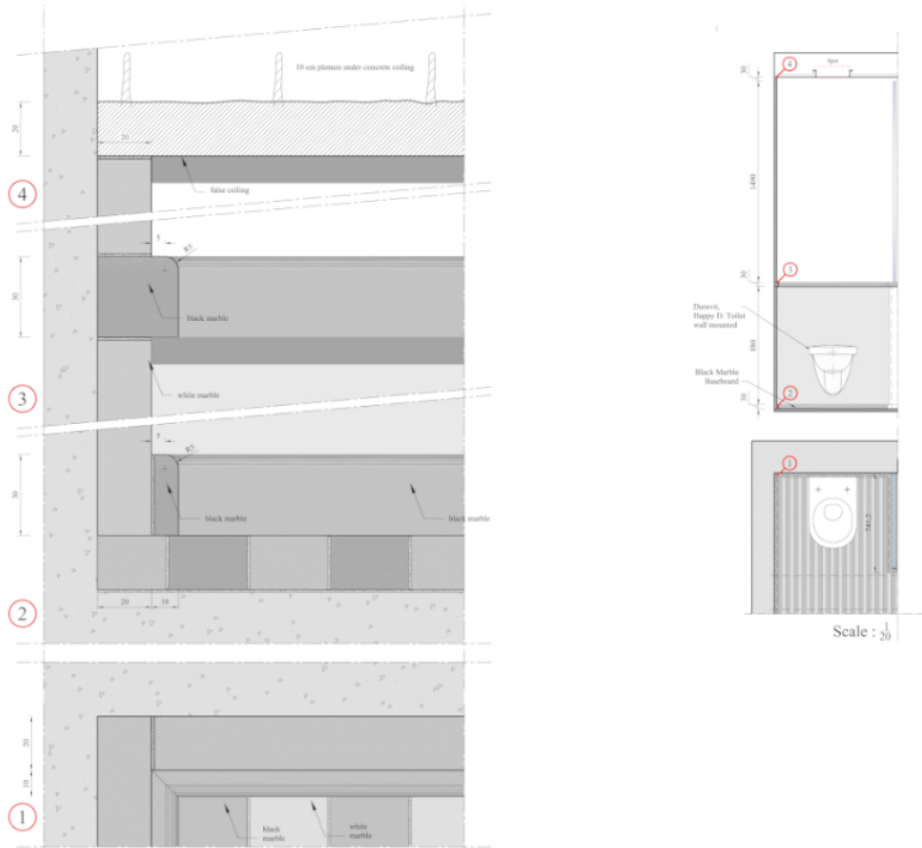
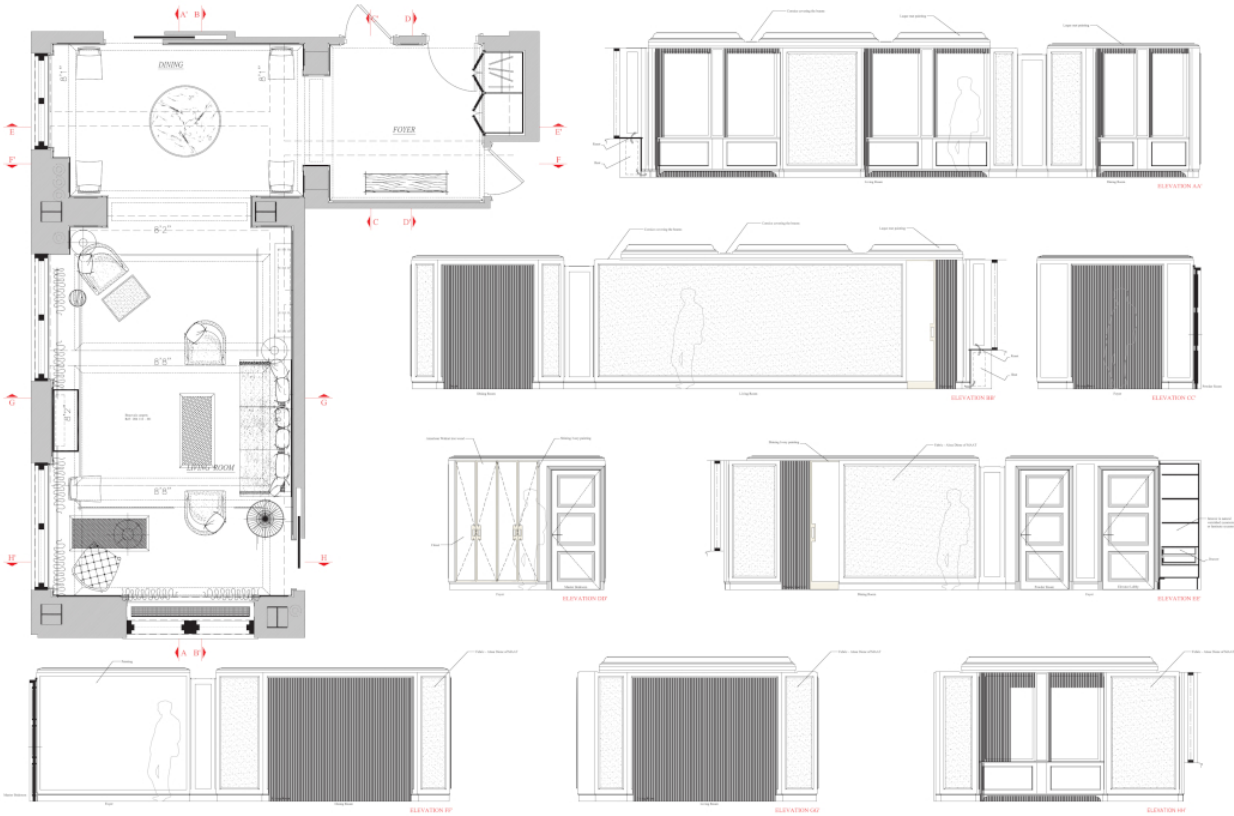
Mainfloor Lobby

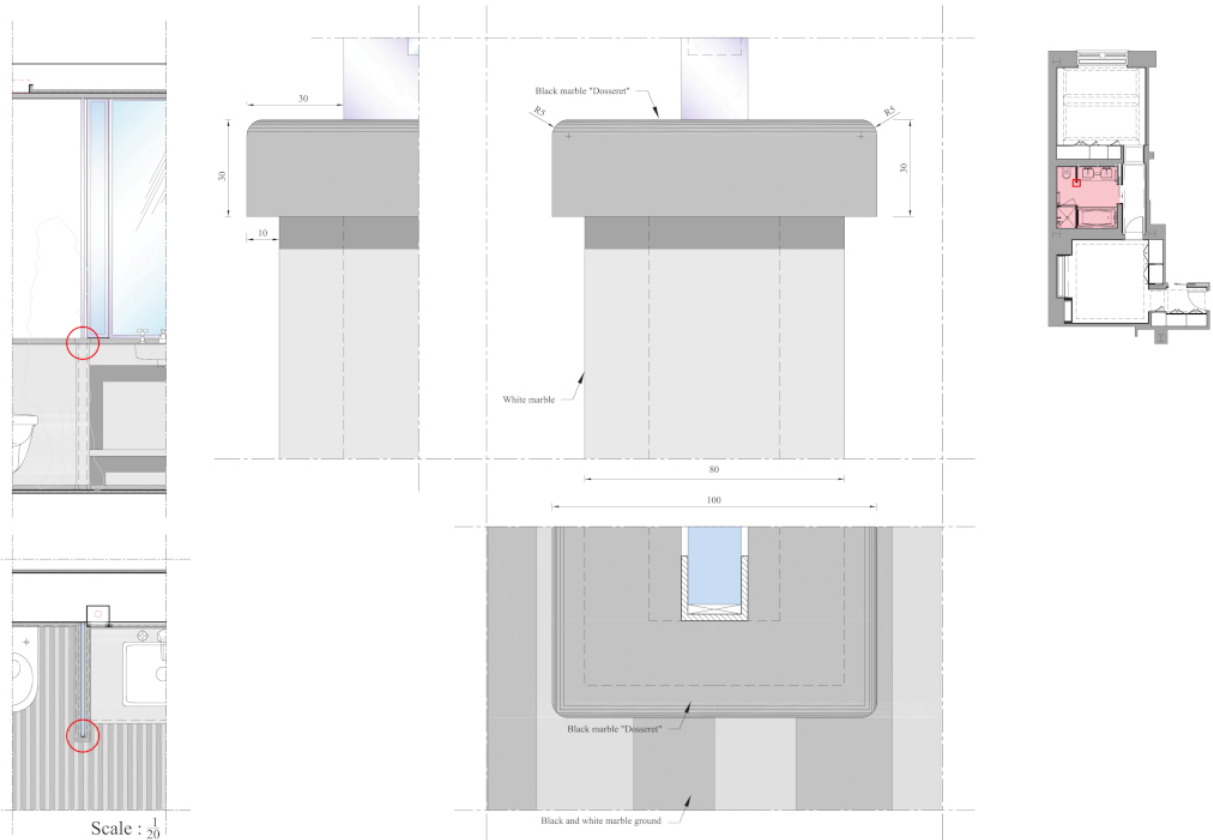


Elevation AA'

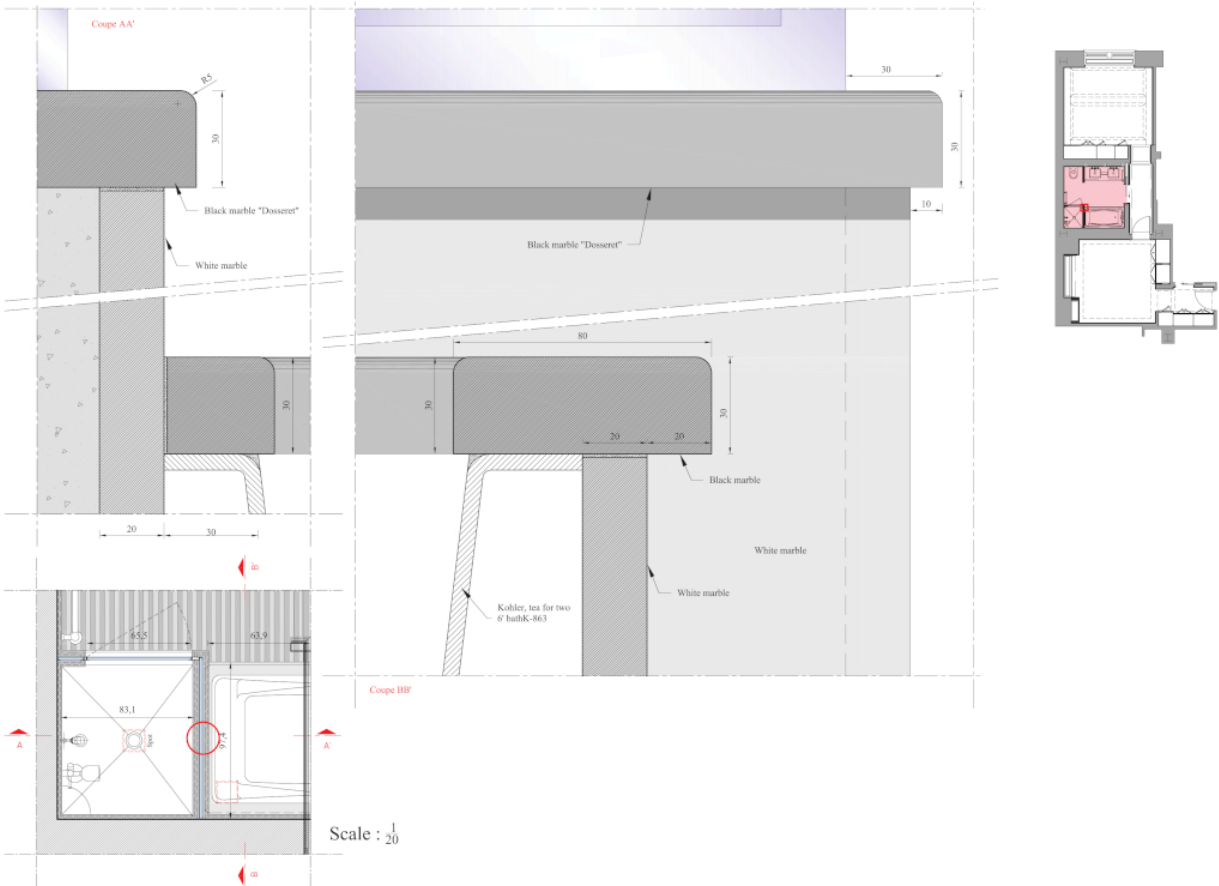




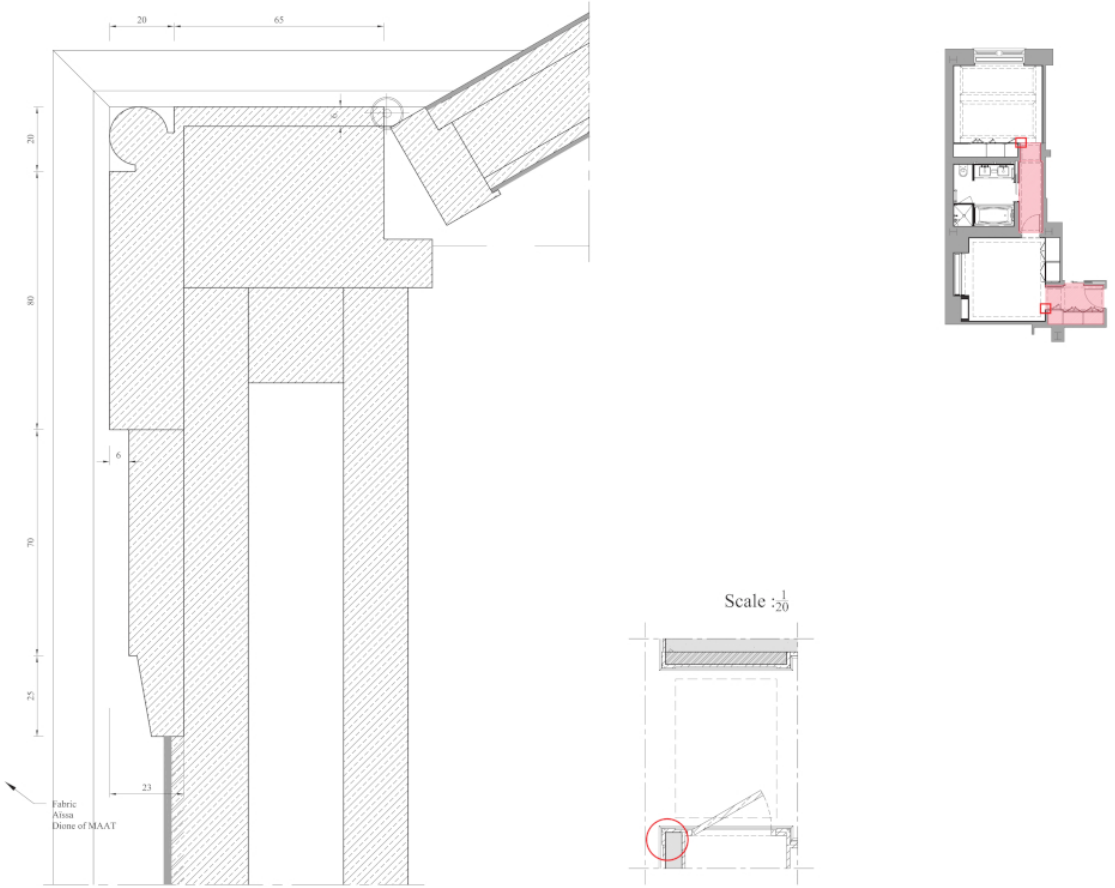
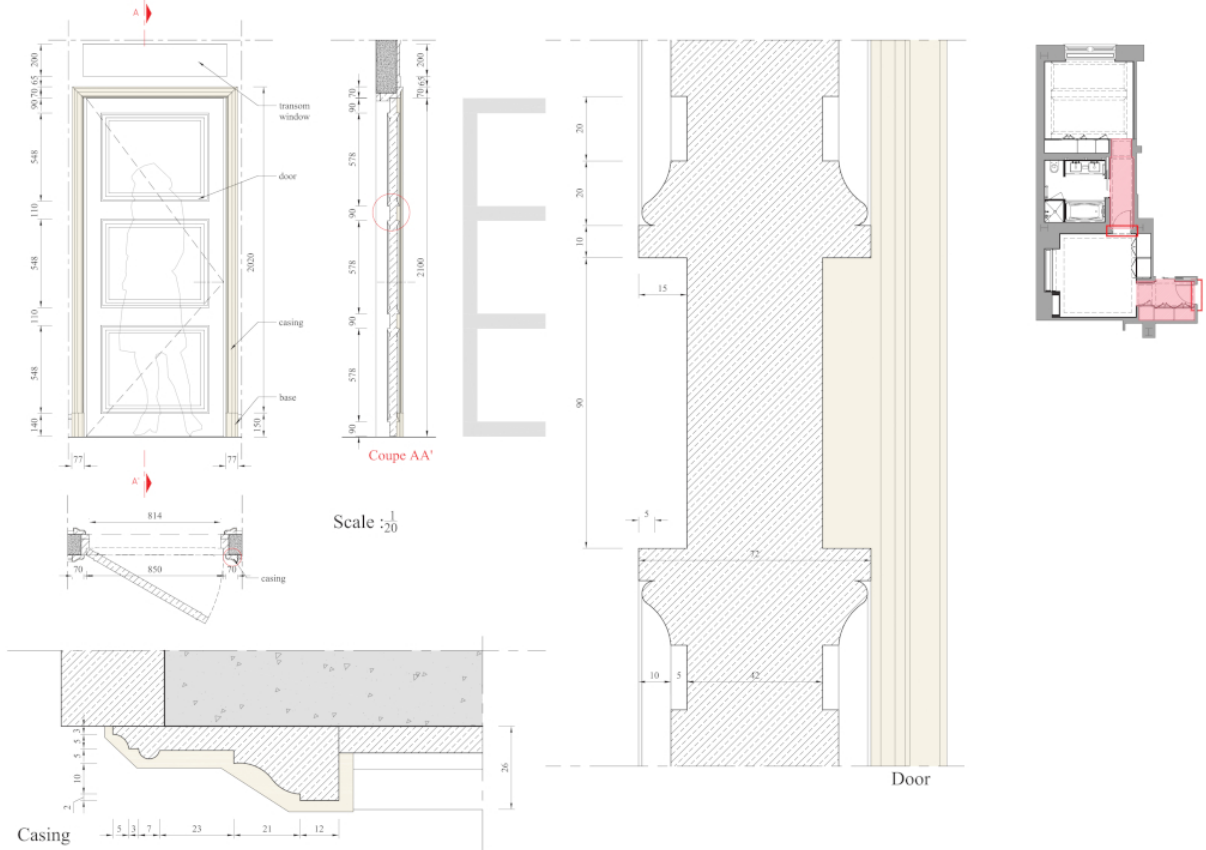


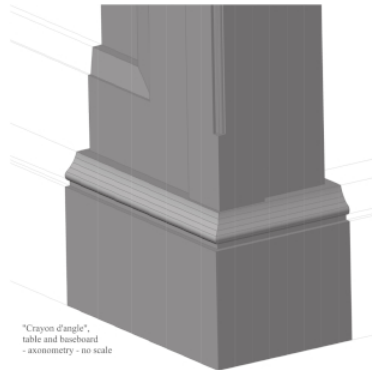
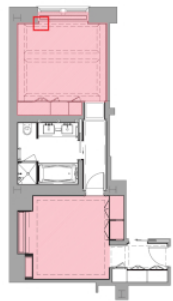
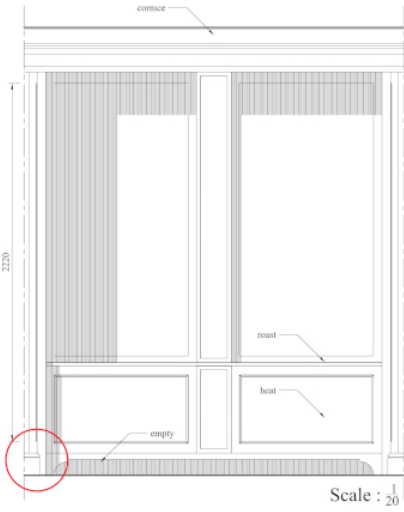
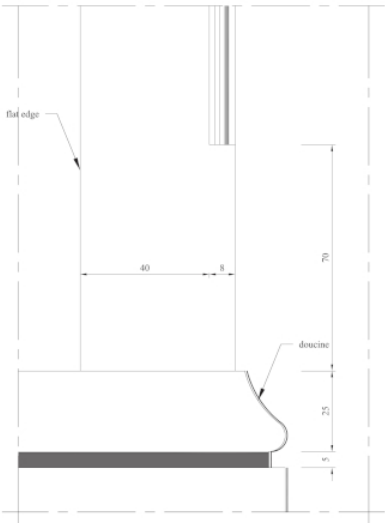
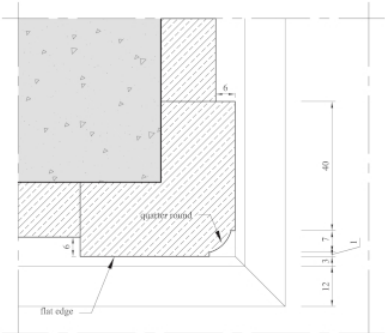
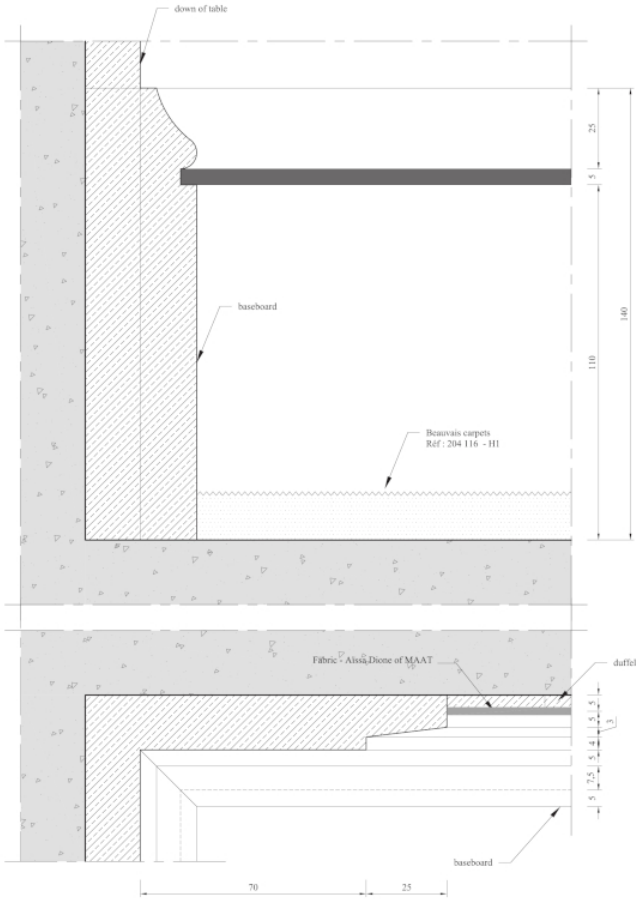
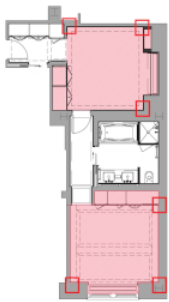


Scale : 1/20

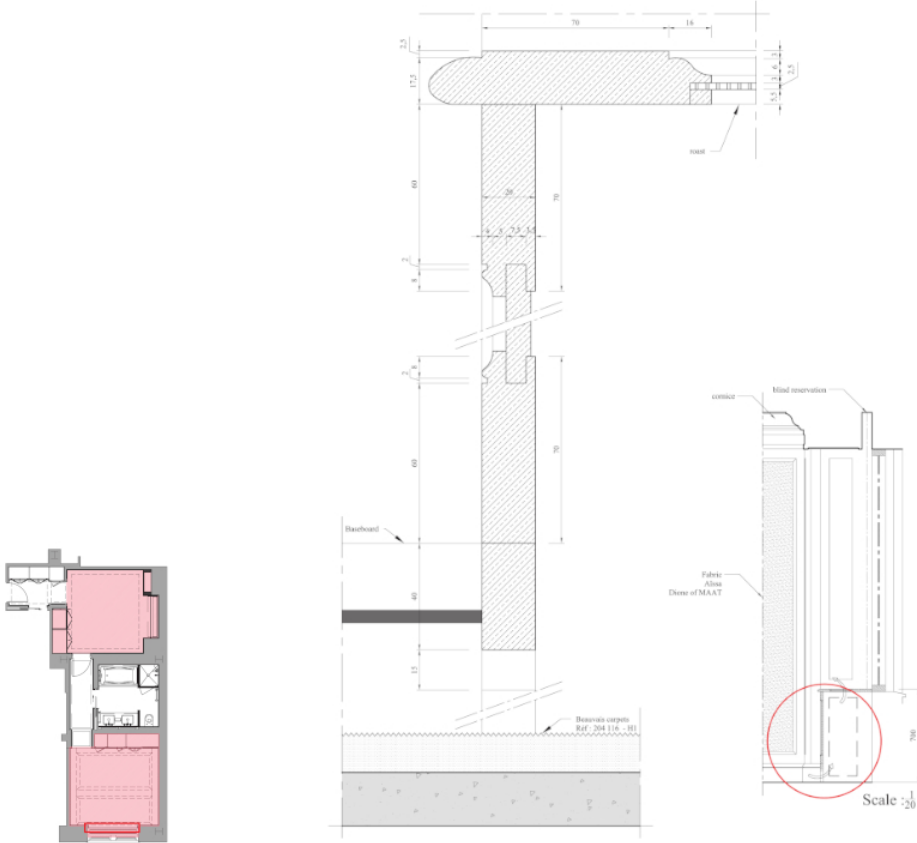
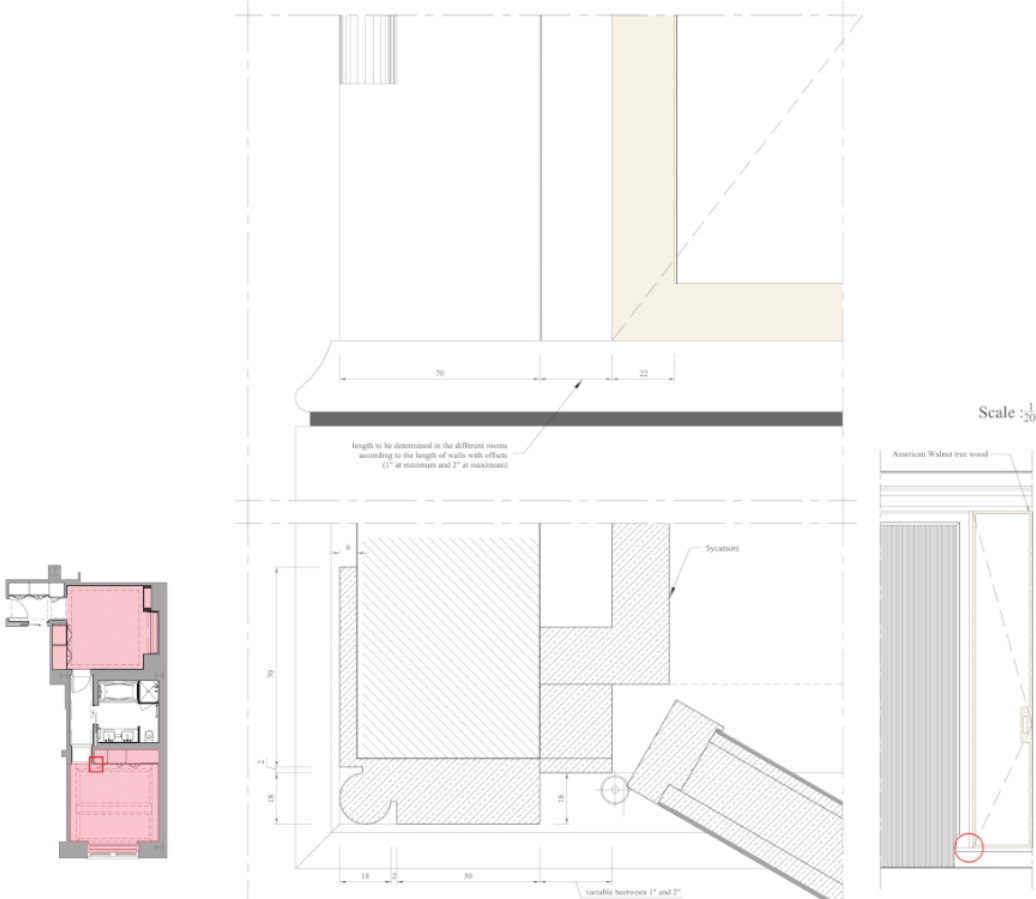


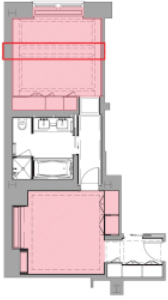
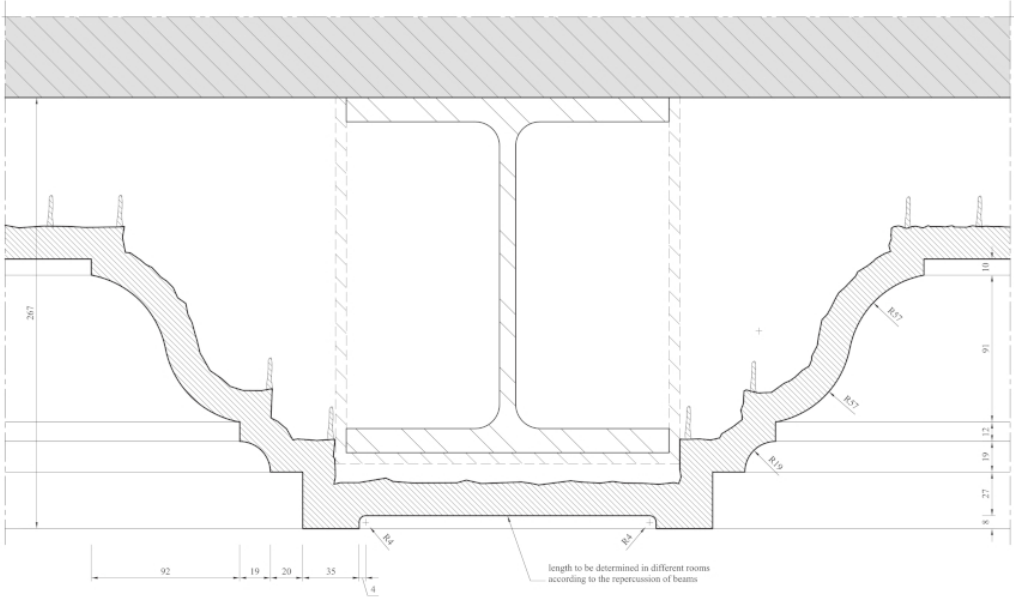
Scale : 1/20



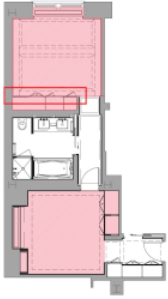
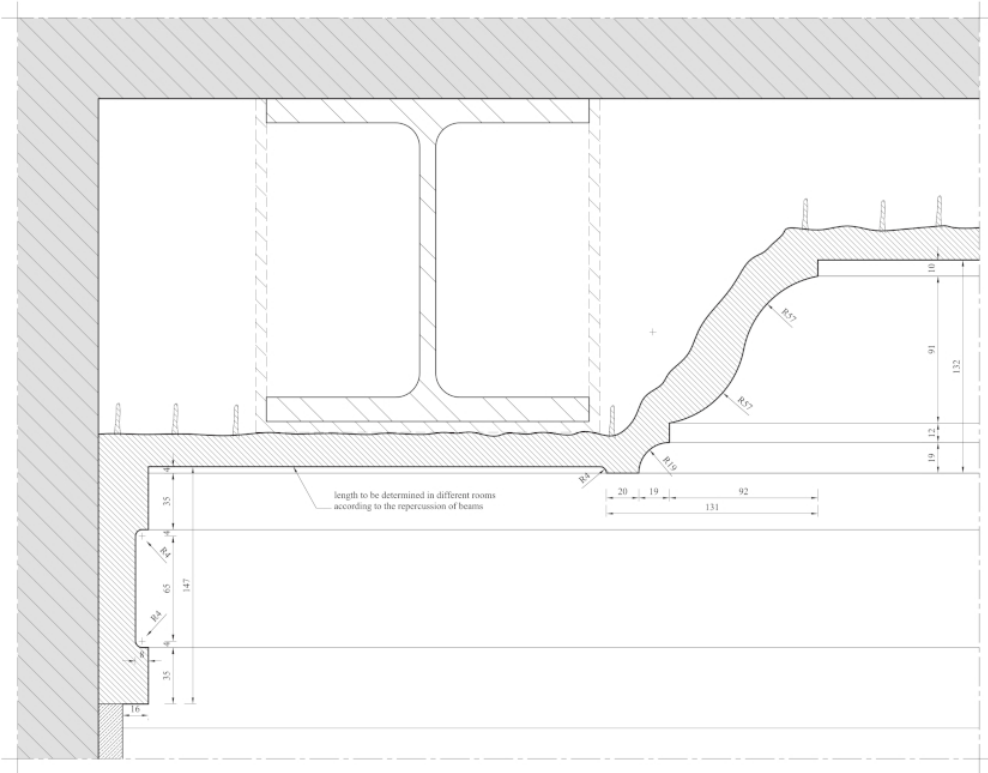


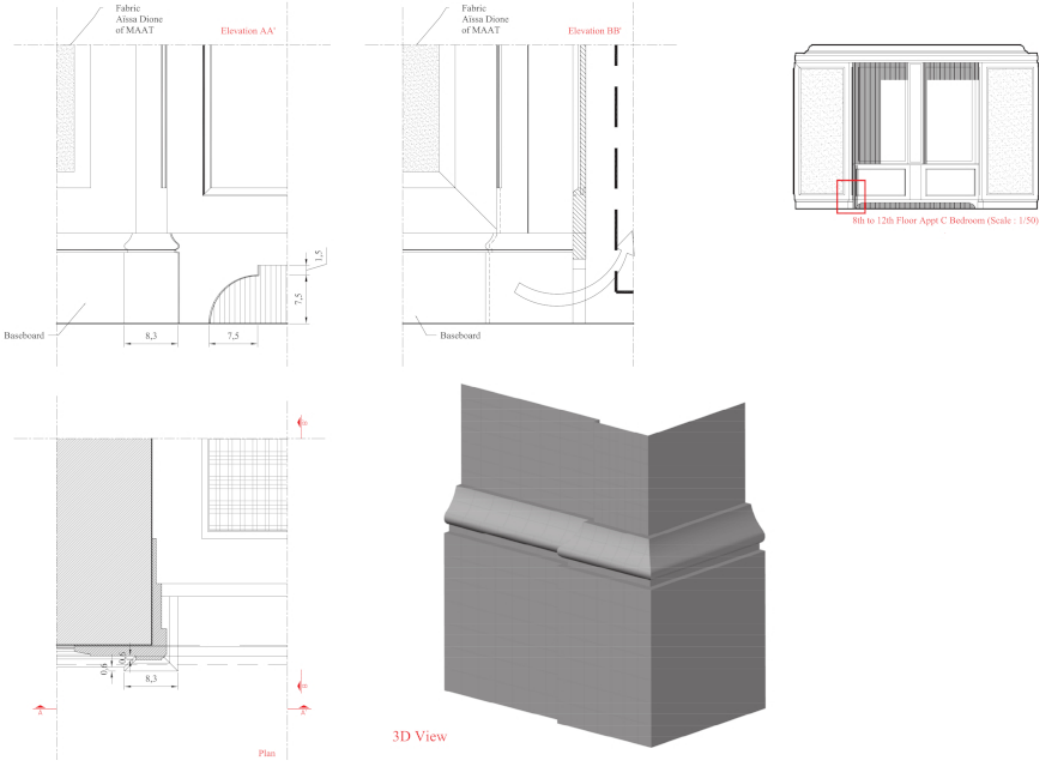
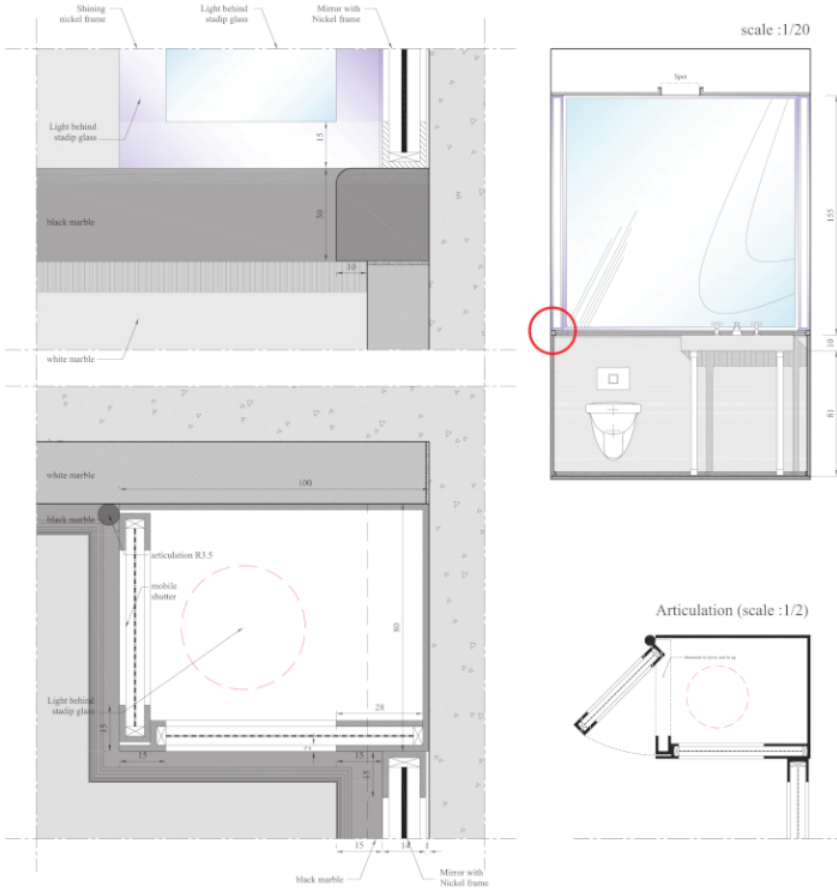
"Crayon d'angle",
table and baseboard
- axonometry - no scale

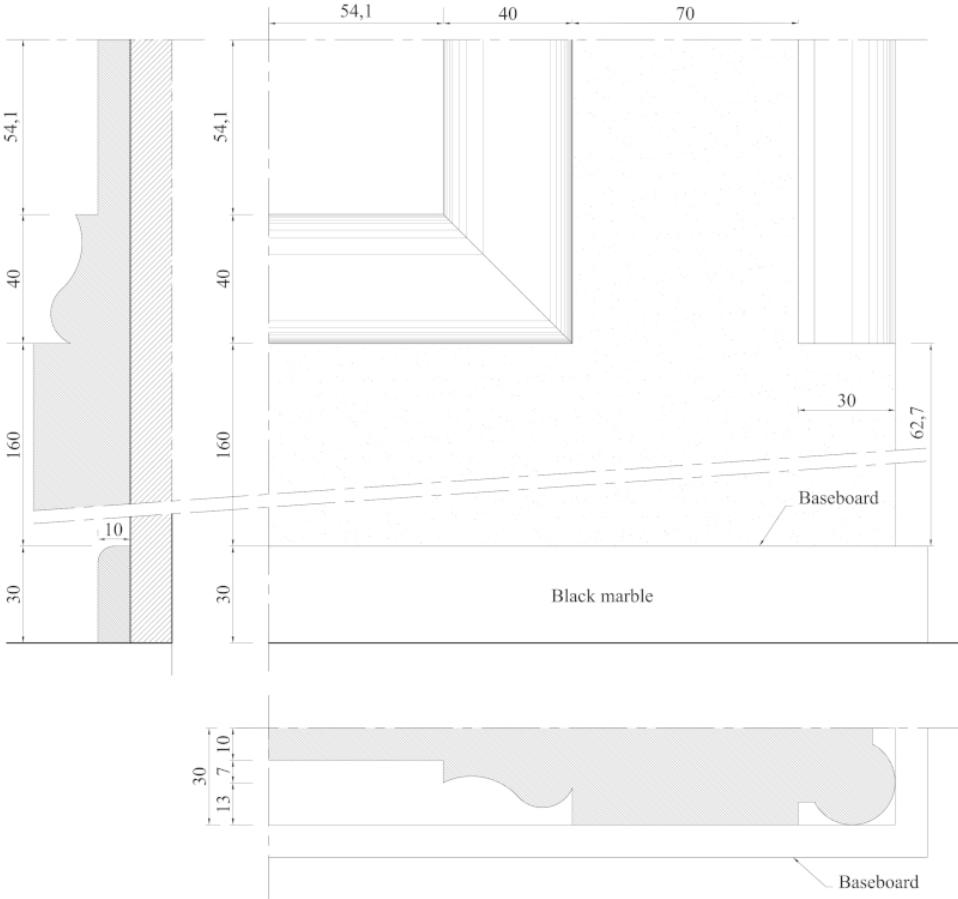




N







Mark Hotel

Projet déco

Réhabilitation du Mark Hotel

Quand on produit les pièces graphiques pour le projet déco d'un grand nom de la scène internationale, la précision et la qualité graphique des plans participent à la réalisation d'ouvrages de qualité et à la communication commerciale du projet. Le dossier PRO se compose de plans, d'élévations et de carnets de détails, tous disponibles en version bilingue, formant ainsi une documentation complète.
